

CatalystCommand™ Labor Management

Maximize Performance and Maintain Quality and Safety

Labor management is about more than just increasing the productivity of a labor force. Yes, a labor management project is probably the least risk, fastest ROI supply chain software project there is. But through fair and defensible standards a facility can smooth out operations, eliminate subjective evaluations, maintain quality and safety standards and increase predictability. The Catalyst solution provides the information – not just the data – by enterprise, facility, department, and individual in user-configurable presentations while maintaining the level of activity detail required to implement a successful engineered standard.

Start Off Running

For those companies looking to start quickly and simply, CatalystCommand™ Labor Management is bundled with over 30 work-types with operational and forecasting algorithms built in. An easy-to-use “area-to-area” distance calculation is available for fast start up and the calculations and elements are user-configurable and transparent. CatalystCommand Labor Management is a web-enabled, Java solution for easy support and can be deployed centrally or remotely on a broad range of platforms. With this approach a company can receive the higher level of benefit of work management and visibility.

The Next Level

Many distribution centers, however, require more accurate standards to implement incentive and other improvement plans. CatalystCommand Labor Management allows room to grow with sophisticated features to expand control, accuracy, visibility and predictability, as you need them.

FUNCTIONAL HIGHLIGHTS:

- **BestPath Distance Calculation** – A step beyond simple XYZ distance calculations, the solution provides detailed breakdowns of vehicle speed and acceleration behaviors on a per vehicle or vehicle type basis. BestPath provides a flexible, rules-based interface to your WMS locations and determines the path the operator should take to move from one location to another for supremely accurate travel distances. This capability has a graphical, user-maintainable interface that can integrate to more than one WMS (or other application) at a time.
- **Clock-to-Clock Time** – Clock-to-clock time can be entered directly into the system or through and integration with an existing time and attendance application. The system also has the capability of logging workers on automatically when they perform their first operation.

Realize Profits Quickly

CatalystCommand™ Labor Management will generate profits quickly:

- Identify unproductive time and processes
- Increase operational consistency by enforcing best practices
- Promote best practices and maintain quality and safety standards
- Identify the best performers and those that need additional help



We Make It Easy for You

CatalystCommand Labor Management is easy to buy, implement and use.

Easy to Buy:

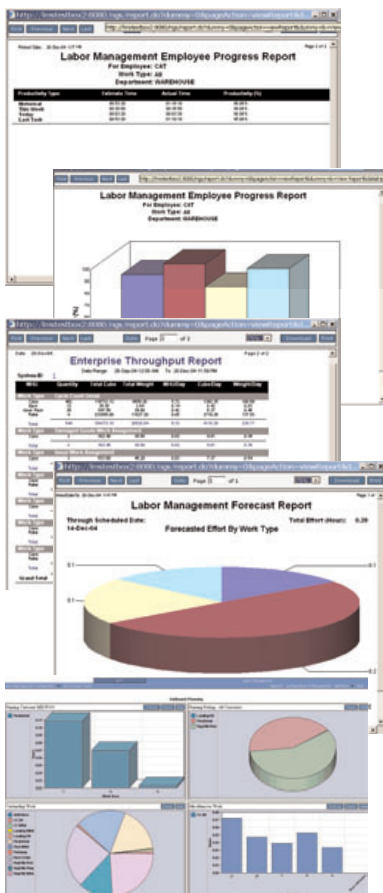
- Affordable and flexible licensing models
- Easily identifiable return on investment

Easy to Install and Implement:

- Lightweight XML-Based adaptors for integration

Easy to Use and Operate:

- Web-based graphically-rich user interface
- OAG based XML integration standard
- Built with JAVA-J2EE technology to allow deployment on multiple platforms



- **Cube and Weight Range Factors** – Labor management has quick-to-configure cube and weight ranges to adjust standard calculations based upon size, weight and handle attributes for items in your facility.
- **Standard and Cumulative Weight Fatigue Factors** – In addition to standard time based fatigue factor the solution can provide standards adjustments based upon the cumulative weight handled by an individual during a shift.
- **Delay Factor** – Clock-to-clock time can be emulated by the Labor System out of the box as a matter of course for standard operations or for explicit logins and logouts. The system also has an integration point for external time and attendance application integration.
- **Track Idle Time** – Unlike other solutions, CatalystCommand Labor Management tracks direct, indirect and idle time.

Reporting

- **Productivity** – Performance can be reported by individual, enterprises, facility, department, work type and work zone
- **Incident Tracking** – Safety and Quality incidents can be reported side by side with performance
- **Throughput** – Production statistics for enterprise, individual and other levels
- **Operational Reports** – Reports for employee evaluation, activity, historical performance and other

Architecture and Integration

- **Alerts and Dashboards** – Labor Management comes bundled with alerts that can give you real-time notification of when the labor content of operations is going haywire. Automatically updated, dashboards are user-configured to show only what the user needs to see.
- **Integration** – Multiple integration options are available that can be either real-time or batch transaction based to fit your requirements.
- **Standard, Real-Time SAP® WM Integration** – Catalyst is recognized as the industry leader in SAP implementation and integrations with multiple integration options including a standard real-time interface to SAP WM.

Contact Us Today

For more information on how CatalystCommand Labor Management can increase your productivity, contact Catalyst International at www.catalystinternational.com or call 800-236-4600 today.